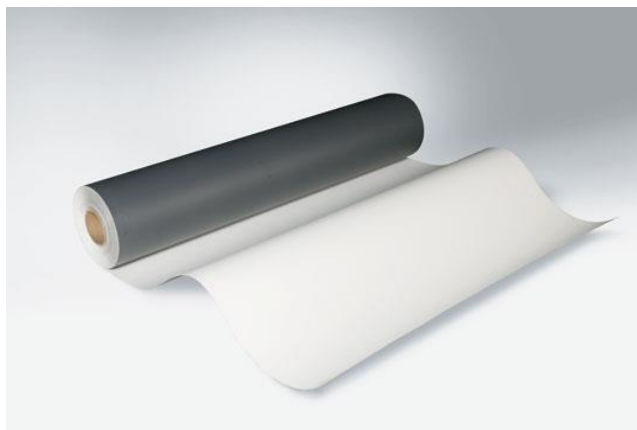


# **MAPEPLAN TPO SINGLE PLY MEMBRANES**

## **Mapeplan®**

SINGLE-PLY WATERPROOFING TECHNOLOGY



### **Mapeplan TM - Membrane for mechanical fixing**

Mapeplan TM is a synthetic roofing waterproofing membrane in flexible Polyolefin TPO/FPO produced in one multi-extrusion coating process with high quality raw materials reinforced with polyester net. Mapeplan TM is suitable for exposed roof installations and for mechanical fixing. It is resistant to ultraviolet rays and may be exposed to all weather conditions.

### **Mapeplan T AF - Membrane for fully-adhered roofing with membrane adhesive.**

Mapeplan T AF is a synthetic roofing waterproofing membrane in flexible Polyolefin TPO/FPO produced in one multi-extrusion coating process with high quality raw materials reinforced with glass mat. Mapeplan T AF is backed with 300g/m<sup>2</sup> Fleece for use as a fully adhered system.

**Mapeplan TM and T AF are both available in Smart White and Lead Grey.  
Roll Sizes – 2.1m x 20m.**