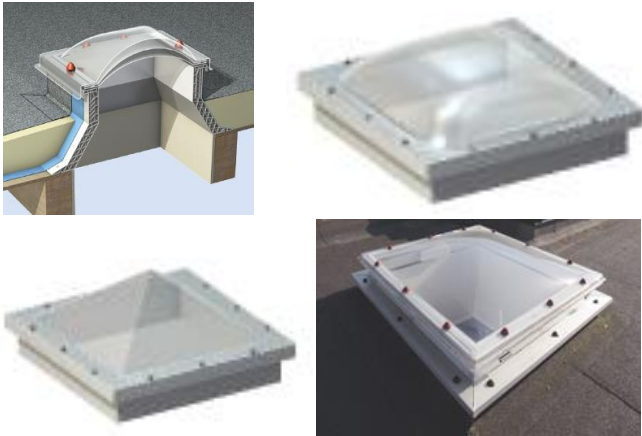


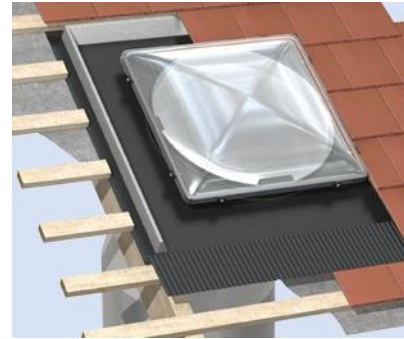
EM-DOME ROOFLIGHTS



Em-Dome Rooflights come in a choice of single, double or triple skin and with clear or opal diffused glazing options. Domes are factory assembled and supplied with high security screwbolt fixings and sealing tape. PVC or GRP insulated upstands are available for all dome sizes as well as vented curb adaptors, opening frames or access hatch frames.

<u>SQUARE</u>		<u>RECTANGULAR</u>	
Code	Curb Size (outside)	Code	Curb Size (outside)
S1	500x500mm	R3	500x800mm
S2	600x600mm	R3a	500x1100mm
S3	650x650mm	R4	600x900mm
S4	700x700mm	R4a	600x1200mm
S5	800x800mm	R4b	600x1800mm
S6	850x850mm	R5	700x1000mm
S7	900x900mm	R6	700x1300mm
S8	1000x1000mm	R7	800x1100mm
S9	1100x1100mm	R7a	800x1400mm
S10	1150x1150mm	R7b	800x1700mm
S10a	1200x1200mm	R10a	900x1200mm
S11	1300x1300mm	R11	900x1400mm
S12	1400x1400mm	R11a	900x1800mm
S13	1500x1500mm	R16	1000x1300mm
S15a	1800x1800mm	R16a	1000x1600mm
		R17	1100x1400mm
	<u>CIRCULAR</u>	R17a	1100x1600mm
		R18	1100x1700mm
		R20	1100x2300mm
Code	Curb Size (outside)	R22b	1200x1800mm
C1	500mmØ	R22c	1200x2400mm
C2	600mmØ		
C3	700mmØ		
C4	800mmØ		
C5	900mmØ		
C6	1000mmØ		
C7	1100mmØ		
C8	1200mmØ		

EM-TUBE SKYLIGHTS



Em-Tube Tubular Skylights effectively transmit natural daylight to internal rooms or areas that do not receive adequate daylight. Natural daylight is captured at roof level and directed downwards through rigid or flexible tubes and then diffused at ceiling level.

Flat and pitched roof tubular skylights

Many buildings suffer from low levels of daylight. Occupants and workers in all types of building, e.g. residential and commercial buildings, schools and hospitals all benefit from increased levels of natural daylight. Natural daylight in buildings reduces energy demand and provides the full colour spectrum, thus reducing eyestrain, improving concentration and increasing productivity.

Em-Tube is an innovative and effective means of transmitting natural daylight to otherwise poorly lit areas and with the ventilation options available the units can assist compliance with Building Regulations.

The skylights can be installed into new or existing roofs with ease and can be accommodated within most roof construction types.

How much light does Em-Tube transmit?

Tests carried out in the UK prove that anything up to fourteen times the equivalent of a 100 watt bulb can be achieved with 3m of flexible Em-Tube run on the 550mm diameter unit.

Light intensity at three times during one day

